

CORONAVIRUS COVID-19

PRECAUTIONARY MEASURES



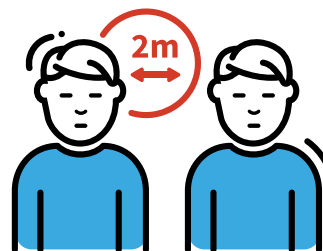
Wash your hands regularly and properly with water and soap.



Cough or sneeze into the crease of the elbow or in a tissue.



Avoid shaking hands or kissing.



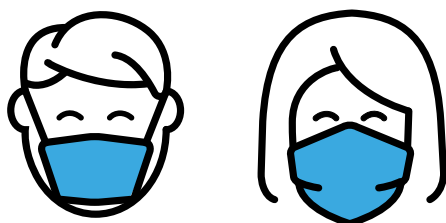
Avoid close contact with people.



Limit your interpersonal contacts and your movements to the necessary.



Avoid touching your face with your hands.



#NotWithoutMyMask

The mask is complementary to the other precautionary measures.

version 12/05/2020

For more information:
www.gouvernement.lu/coronavirus



LE GOUVERNEMENT
DU GRAND-DUCHÉ DE LUXEMBOURG